

# WINDOW WELL SYSTEMS



**PROFI window wells – the master solution for every building project!**



- **made of glass fiber reinforced polyester GRP**
- **sturdy and safe**
- **proven its worth millions of times and for more than 35 years**



**WOLFARTH**  
Bauelemente aus  
Stahl + Kunststoff

**WOLFA**

## High-tech GRP material and almost 60 years of experience and expertise

As one of the first companies in Europe, **WOLFA** has been producing, processing and handling glass fiber reinforced polyester since 1955.

The particular characteristics of this plastic material, our 60 years of experience and our expertise in producing and processing GRP guarantee successful products for a great variety of applications.

Based in Germany, **WOLFA** has been producing window wells for almost four decades and grown into one of today's leading manufacturers in this special field.

In all these years, **WOLFA** window wells have proven their worth millions of times on construction sites all over the world.

## Material and characteristics

**WOLFA** PROFI window wells are made of glass fiber reinforced polyester (GRP) and compression-molded (SMC) into the final product.

- SMC is a thermosetting plastic material, i.e. no elastomer such as polypropylene (PP) or PVC.
- It is permanently resistant to weather and heat-proof up to 100° C, short-term even up to 200° C; the material is inherently stable and can be used under hot asphalt. SMC is resistant to cold and does not become brittle; it is UV-proof and resistant to wear and tear.
- Another major advantage is its resistance to petrol, liquid manure and many chemicals.

Thanks to its excellent material characteristics, SMC today also plays an important part in the automobile and aerospace industry.



*The great advantage compared to conventional window wells: the large sized glass fibers and high amount of SMC material warrant maximum stability which, in turn, enables the production of larger than usual window wells.*



*Glass fiber integration into the raw material*



*SMC raw material (also called prepreg) production line*



## Production of material and product in our own shop – from one source, under one roof

Thermosetting plastic SMC (Sheet Molding Compound) is a mix of unsaturated polyester resins (UP), textile glass fibers, filling material and various additives.

The raw material (prepreg) is produced in our **WOLFA** plant in Germany.

Our sophisticated formulas, state-of-the-art process technologies and techniques guarantee unmatched raw material quality.

Produced as continuous material and left to set for several days, it is then processed as needed for each individual window well type and molded into the finished product.



**WOLFA** production lines for pressed GRP components.

## PROFI window well molds and shapes

The up to 30-ton compression molds are designed, developed and produced in our own **WOLFA** toolshop. Technological state-of-the-art production techniques, official certificates and approvals, and decades of practical experience and know-how gained from millions of **WOLFA** window wells installed add life to each new window well shape and type.



Compression mold for large window wells

## The result

The result from all these components is a window well system that suits every building project and situation

*The PROFI window well by **WOLFA***



*The tools are designed and built by qualified expert personnel in our own toolshop.*

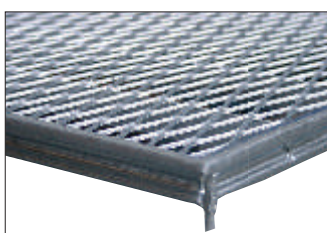
## Patented edge protection grilles – standard procedure without extra charge

All our **WOLFA** PROFI window wells are produced with our patented edge protection grille. The **WOLFA** window well edges come with a special protection which, contrary to competitor products, prevents damage during filling. The edge protection grilles satisfy highest optical demands and melt flush and immaculately into the adjoining asphalt or pavement. Contrary to conventional window wells whose grilles are merely placed into the shaft, all disturbing dirt traps between **WOLFA** window well edge and grille insert have been eliminated by design.

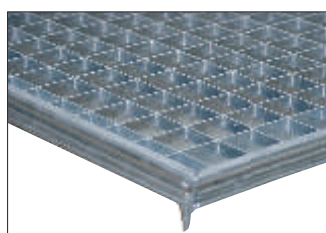
## **WOLFA** edge protection grilles stand out by their extremely high durability

With their installation height of 30 mm, **WOLFA** window well grilles are considerably higher than the conventional grilles available on the market. This higher installation height makes the grilles heavier and sturdier. The 30/10 meshed pressure-locked grating easily withstands normal passenger cars.

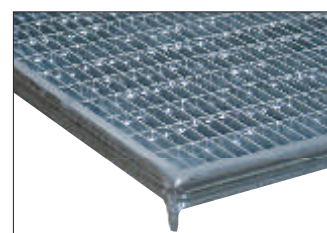
## Designs and weight carrying capacity



*Expanded metal edge protection grille for loads of up to 4.7 kN*

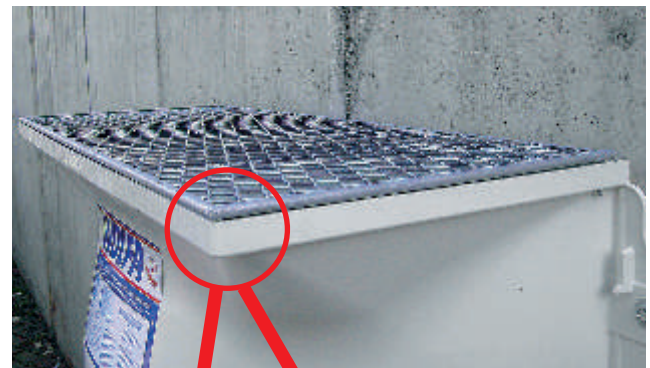


*Pressure-locked edge protection grille  
Mesh width 30/30  
for loads of up to 6.2 kN*

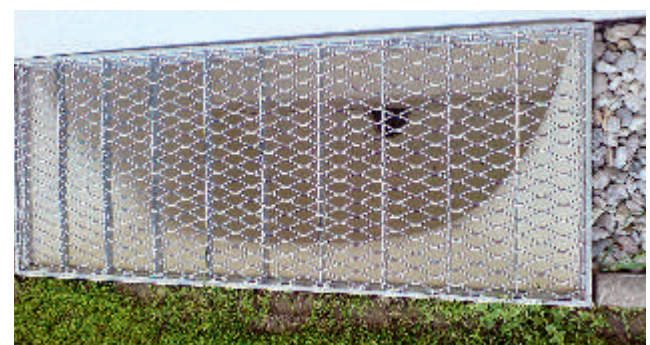
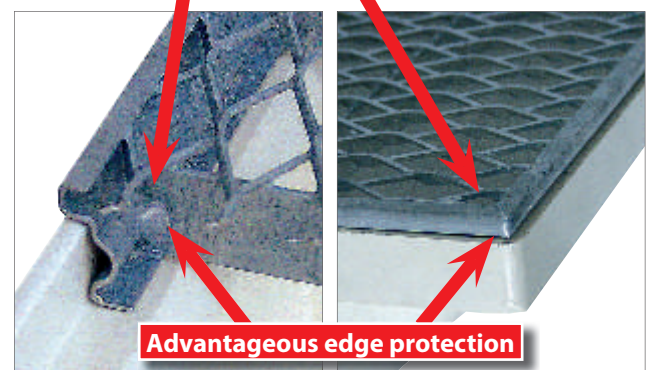


*Pressure-locked edge protection grille  
Mesh width 30/10\*  
for loads of up to 7.2 kN*

*\*For sidewalks and terraces we recommend pressure-locked edge protection grille mesh size 30/10*



***WOLFA** edge protection grilles are the heaviest and sturdiest standard grilles on the market.*



*Flush edges thanks to the edge protection grille*

## Available sizes

### Standard version

**Inner dimensions in cm**  
**Width x height x wall distance**

81 x 66 x 43 cm  
81 x 101 x 43 cm  
101 x 66 x 43 cm  
101 x 81 x 43 cm  
101 x 101 x 43 cm  
101 x 101 x 60 cm  
101 x 131 x 43 cm  
101 x 131 x 60 cm  
126 x 101 x 43 cm  
126 x 101 x 60 cm  
126 x 131 x 60 cm  
151 x 121 x 60 cm  
175 x 80 x 60 cm  
200 x 120 x 60 cm

### Outer window well dimensions

95.0 x 71.5 x 43.4 cm  
95.0 x 106.5 x 43.4 cm  
115.0 x 71.5 x 43.4 cm  
115.0 x 86.5 x 43.4 cm  
115.0 x 106.5 x 43.4 cm  
115.0 x 106.5 x 60.0 cm  
115.0 x 136.5 x 43.4 cm  
115.0 x 136.5 x 60.0 cm  
140.0 x 106.5 x 43.4 cm  
140.0 x 106.5 x 60.0 cm  
140.0 x 136.5 x 60.0 cm  
165.0 x 126.5 x 60.0 cm  
190.0 x 84.7 x 60.0 cm  
215.0 x 126.5 x 60.0 cm



## Reinforced and car-trafficable window wells

Reinforced versions for difficult ground conditions such as loamy soil or steep hillside conditions.  
Car-trafficable models with pressure-locked edge protection grilles, mesh size 30/10



### Reinforced version

**Inner dimensions in cm**  
**Width x height x wall distance**

81 x 66 x 43 cm  
81 x 101 x 43 cm  
101 x 66 x 43 cm  
101 x 81 x 43 cm  
101 x 101 x 43 cm  
101 x 101 x 60  
101 x 131 x 43  
101 x 131 x 60  
126 x 101 x 43  
126 x 101 x 60  
126 x 131 x 60  
151 x 121 x 60

### Car-trafficable version

**Inner dimensions in cm**  
**Width x height x wall distance**

81 x 66 x 43  
81 x 101 x 43  
101 x 66 x 43  
101 x 81 x 43  
101 x 101 x 43  
101 x 101 x 60\*  
101 x 131 x 43  
101 x 131 x 60\*  
126 x 101 x 43  
126 x 101 x 60\*  
126 x 131 x 60\*  
151 x 121 x 60\*\*

*Cross traffic requires wall grille brackets*

*\* We recommend wall grille brackets*

*\*\* Wall grille brackets necessary*



## Window well add-ons

Lower basement levels require window well add-on tops to balance out the different ground levels.

**WOLFA** offers a perfectly synchronized system. The new PROFI add-ons with their extra strong cross ribs are made-to-measure and easy to push over and screw to the window well.

- The window well add-on allows stepless adjustment from 7 to 33 mm.
- Up to three add-ons can be mounted on top of each other. The reinforced add-ons and window wells need to be used with their respective bracings. The add-on at the bottom is used for leveling.



## Available sizes

### Standard version

Inner dimensions in cm

Width x height x wall distance

81 x 35 x 43  
101 x 35 x 43  
101 x 35 x 60  
126 x 35 x 43  
126 x 35 x 60  
151 x 35 x 60  
175 x 35 x 60\*  
200 x 35 x 60\*

\*Add-on assembly

### Reinforced version

Inner dimensions in cm

Width x height x wall distance

81 x 35 x 43  
101 x 35 x 43  
101 x 35 x 60  
126 x 35 x 43  
126 x 35 x 60  
151 x 35 x 60



### Car-trafficable version

Inner dimensions in cm

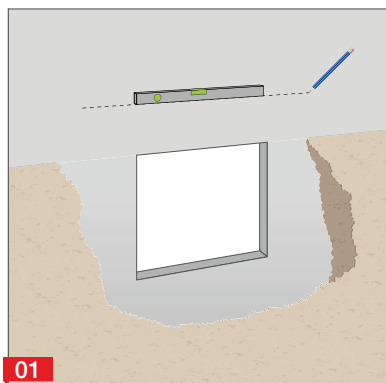
Width x height x wall distance

81 x 35 x 43  
101 x 35 x 43  
101 x 35 x 60  
126 x 35 x 43  
126 x 35 x 60  
151 x 35 x 60



Bracings

## Window well and add-on assembly instructions


**01**

Determine the height of the add-on and draw on wall. The distance between the lower edge of the window and that of the window well bottom should be at least 15 cm


**02**

Hook up the grating before mounting. For sidewalks and terraces we recommend pressure-locked edge protection grille mesh size 30/10. Draw and drill the holes. The hole dimensions are indicated on the window well outside, upper right corner.


**03**

Screw the window well to the wall.


**04**

Push the add-on over the window well from the outside. The add-on height can be adjusted from 7 to 33 cm.


**05**

Drill the fastening holes for the add-on.


**06**

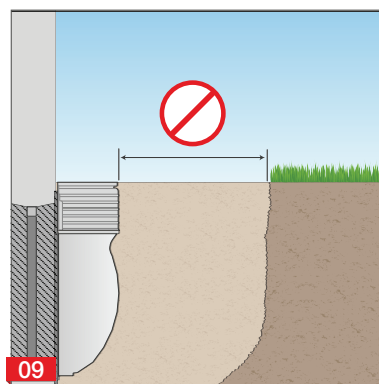
Insert grating into add-on. Hook the anti burglary system into the two perforated bearing bars and fasten to the add-on with the screws included in the consignment. Screw on the add-on.


**07**

If two add-ons are mounted, use the bottom add-on for leveling. Then slide the top add-on bottom first from the outside into the groove provided on the bottom add-on for second add-on insertion. If two add-ons are mounted, the minimum height adjustment is 42 cm, the maximum height adjustment is approx. 65 cm.


**08**

To achieve optimal stability we recommend reinforcement of either bottom add-on or window well with a bracing (see window well accessories).


**09**

Fill in layers of gravel, compact layer by layer. Keep heavy devices at a safe distance.

## New requirements – and our solutions

The recent years have been witness to increased and heavy rainfall which, in turn, caused floods and sewer system overloads.

Building sites in attractive locations, on the other side, especially in urban environments, are becoming scarce and ever more expensive.

As a consequence, more and more building sites are being offered in locations with high groundwater levels and pressing waters which demand special solutions in particular when it comes to window well systems.

**WOLFA** has designed the answer to difficult conditions where water may be pressing from below.

Manufactured as pressure-water-tight version with additional fastening rails, seals and sealing material, **WOLFA** PROFI window wells guarantee permanent watertightness.

## Certified tightness and safety

The PROFI products have been subjected to long-term watertightness tests in extreme conditions.

The tests carried out at the Leipzig material and test institute showed:

### All tight and safe!

**WOLFA** PROFI window wells are available in three different watertight versions:

1 Closed bottom

2 With lockable drainage connection

3 With drain connection and certified non-return valve.

■ Available in 13 different sizes, **WOLFA** offers one of the largest ranges of pressure-water-tight window wells!

## Available sizes

Width x height x wall distance in cm

81 x 66 x 43  
81 x 101 x 43  
101 x 66 x 43  
101 x 81 x 43  
101 x 101 x 43  
101 x 101 x 60  
101 x 131 x 43  
101 x 131 x 60  
126 x 101 x 43  
126 x 101 x 60  
126 x 131 x 60  
151 x 121 x 60



*Assembled, pressure-water-tight PROFI window well with closed bottom*



*Lockable drain connection*



*Certified non-return valve with odor stop*



*Successfully DWD tested system – window well and non-return valve*



## Assembly instructions: pressure-water-tight PROFI window wells



**1** Hinge grille and draw drill holes; drill and anchor holders.



**2** Glue sealing tape into the groove for window well placement and apply part of the cartridge material generously on the window well flange.



**3** Hook the window well with grille into the anchors and tighten the screws just slightly.



Drill additional fastening holes.



Inject cartridge material into the gap between wall and window well.



**4** Mount the additional rail set and hand-tighten the screws.



**5** Inject the rest of the cartridge material (inside window well). Allow to harden for 24 hours, then add layer by layer and compact. Wait at least 24 hours before exposing to water.



## Window well accessories

A well thought out and extensive range of accessories complements the window well system.

### Window well drainage connections



for PROFIL line, with NW 70 drainage outlet



for PROFIL line, with NW 70 drainage connection, detachable leaf screen and odor stop



for window well sizes 175 x 80 x 60 cm with built-in dirt screen and NW 70 connection



for window well sizes 200 x 120 x 60 cm with built-in dirt screen and NW 125 connection



adapter element NW 50/100 or 70/100



bracing for add-on reinforcement



covers made of tempered safety glass ESG for window wells with closed bottom



galvanized emergency ladders for large window wells, widths 151 cm and 200 cm



anchors for installation on insulated concrete walls, different lengths



fastening material and double anti burglary systems are part of the consignment

## **WOLFA** ventilation shafts

Like the window wells, the **WOLFA** ventilation shafts are made of glass fiber reinforced polyester (GRP) and therefore extremely sturdy and weather-proof. They are ideal for fresh-air cooling in underground central heating rooms, cooling rooms and basement spaces in general. All ventilation shafts are supplied with the patented **WOLFA** edge protection grilles. The ventilation shafts can be placed on top of each other, the fastening material is part of the consignment.



## Available sizes

**Width x height x wall distance in cm**

36.5 x 40 x 20

**The following grille variants are available:**

Expanded metal grille

Pressure-locked grating, mesh size 30/30

Pressure-locked grating, mesh size 30/10







## **Frame windows**

### **Windows made of plastic**

### **Residential windows**

### **Front / balcony doors**

### **Multi-purpose windows**

### **Basement windows made of plastic**

### **Basement windows made of steel**

### **Window well systems**

### **Ventilation shafts**

### **Insulating glass**

### **Doormats**

### **Drainage systems**

### **Yard catch basins**

### **Gratings**

### **Stairs**

### **Perforated plates**

### **Soil sifters**

### **Composters**

### **Plastic gratings for industry**

### **Plastic gratings for farming**

### **Feed mangers**

### **Feed troughs**



Your trading partner:

### **Friedrich Wolfarth GmbH & Co. KG**

Bauelemente aus Stahl und Kunststoff

Friedrich-Wolfarth-Straße 91

D-97990 Weikersheim-Neubronn

Telephone: +49 (0) 79 34 / 91 91-0

Fax: +49 (0) 79 34 / 91 91-50

Internet: <http://www.wolfa.de>

Email: [mail@wolfa.de](mailto:mail@wolfa.de)