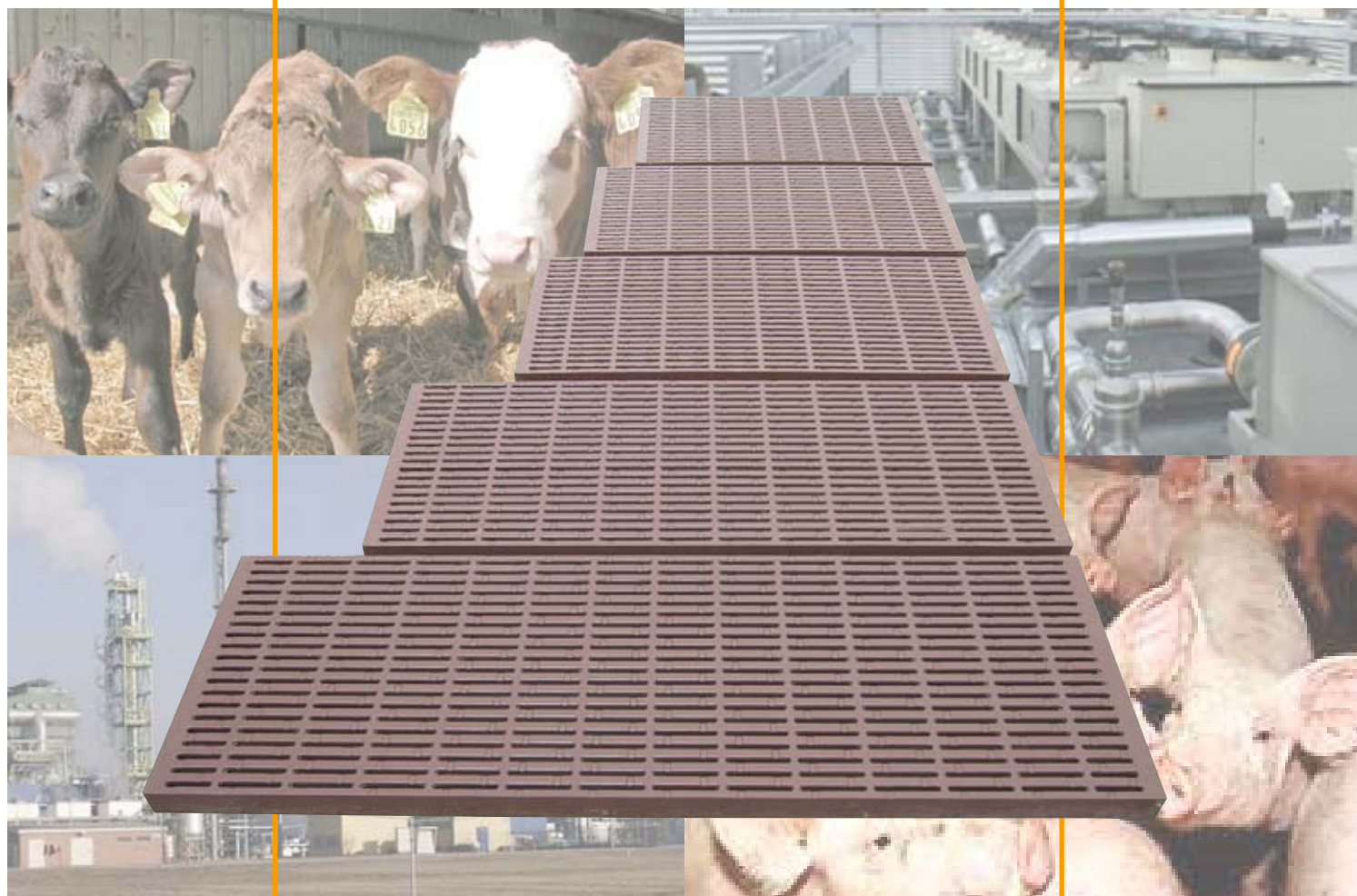


WOLFA

*The Name for Quality
and Cost-effective
Building*

Plastic Flooring for Industry and Agriculture



Plastic **WOLFA** GRP grates
stand out for their quality!

For more than 30 years, our grates have been
tried and tested all over the world.

Benefit from the sum of our experience.

WOLFARTH
Bauelemente aus
Stahl + Kunststoff

WOLFA Plastic flooring

for Industry and Agriculture

WOLFA - Plastic Wolfa flooring is made of fibreglass reinforced polyester (GRP)

WOLFA - Wolfa grates offer many advantages for livestock breeding as well as for industrial purposes.

For livestock breeding in agricultural buildings

Advantages of plastic GRP grates by **WOLFA** in agricultural structures

- animal-friendly and warm
- high amount of slots, clean animals
- self-supporting without reinforcing profiles
- easy installation and cleaning
- acid- and rot-proof
- hygienic and bacteria-resistant
- high load bearing capacity, ideal for pigs and calves
- of low flammability (no PVC, polypropylene or similar thermoplastic materials)
- they have proven their worth for decades, long life

Plastic **WOLFA** grates have been used with great success in agricultural buildings for more than thirty years. We offer a perfect flooring system for pigs, calves, sheep and goats. The grates are certified for animals weighing up to 200 kg.

We offer seven differently dimensioned grate types for a variety of applications:

For industrial environments

- high corrosion resistance
- chemical resistance
- high load capacity
- simple and fast installation
- no electrical or thermal conductivity
- antimagnetic
- no spark generation
- resistant to heat and cold
- high UV resistance
- long life

Fields of application in industry:

In the food and beverage industry, the automotive industry or in pickling and galvanic or other plants, the plastic **WOLFA** grates are used for a manifold of applications. You can find our products, for example, on platforms, stages and catwalks; the grates cover gullies, dumps and shafts or are used to prevent access to hazardous areas.



Sizes and models

Type I for farrowing houses, sheep and goats
Slot width 90 x 9 mm

Type I sizes:

Length: 80 cm 100 cm 120 cm 140 cm

Width: 33,3 cm

Installation height: 5 cm



Type II for pig breeding, sheep and goats
Slot width 86 x 12 mm

Type II sizes:

Length: 80 cm 100 cm 120 cm 140 cm

Width: 33,3 cm

Installation height: 5 cm



Type III for pig fattening and non-pregnant sow
Slot width 86 x 17 mm

Type III sizes:

Length: 80 cm 100 cm 120 cm

Width: 33,3 cm

Installation height: 5 cm



Type IV for calves
Slot width 86 x 23 mm

Type IV sizes:

Length: 80 cm 100 cm 120 cm

Width: 33,3 cm

Installation height: 5 cm



Type V for litter
Slot width 31 x 9 mm

Type V sizes:

Length: 80 cm 100 cm 120 cm 140 cm

Width: 33,3 cm

Installation height: 5 cm



Type VI for farrowing
Slot width 90 x 9 mm

Type VI sizes:

Length: 80 cm 90 cm 100 cm 110 cm 120 cm 130 cm 140 cm

Width: 50 cm

Installation height: 5 cm



WOLFA Plastic flooring

for Industry and Agriculture

Support surface

The plastic **WOLFA** grates require support surfaces of approx. 3 to 4 cm on the right and left. All types (not type IV) provide unslotted contact areas covering the entire support surface.



Connections / grate locks

Types I, II, III, IV and V

Suspension device with triple hinge lock against unhinging. The grates are hooked into each other while specially pressed-on locks safeguard against unintentional disengagement of the elements.



Safety first!



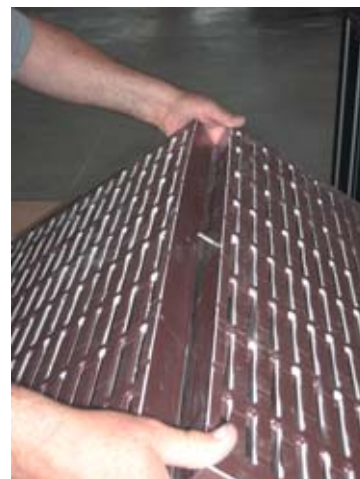
Triple hinge-type protection prevents unhinging.

Types VI and VII

The innovative flooring types VI and VII are lined up next to each other and connected by means of stainless steel pins. Each element comes with a pin on one side and the respective receptacle on the other. The receptacle is marked on the grate. The elements are fit into each other in direction of the arrows and thus firmly connected. Disconnection of the grates is just as simple and fast which makes cleaning much easier.



Simple fitting of the grates.



Whether in industrial environments or agricultural structures – plastic flooring by **WOLFA** is your first choice!

Friedrich Wolfarth GmbH & Co. KG
Bauelemente aus Stahl und Kunststoff
Friedrich-Wolfarth-Straße 91
D-97990 Weikersheim-Neubronn
Tel.: +49 (0) 79 34 / 91 91-0
Fax: +49 (0) 79 34 / 91 91-50
Internet: <http://www.wolfa.de>
Email: mail@wolfa.de