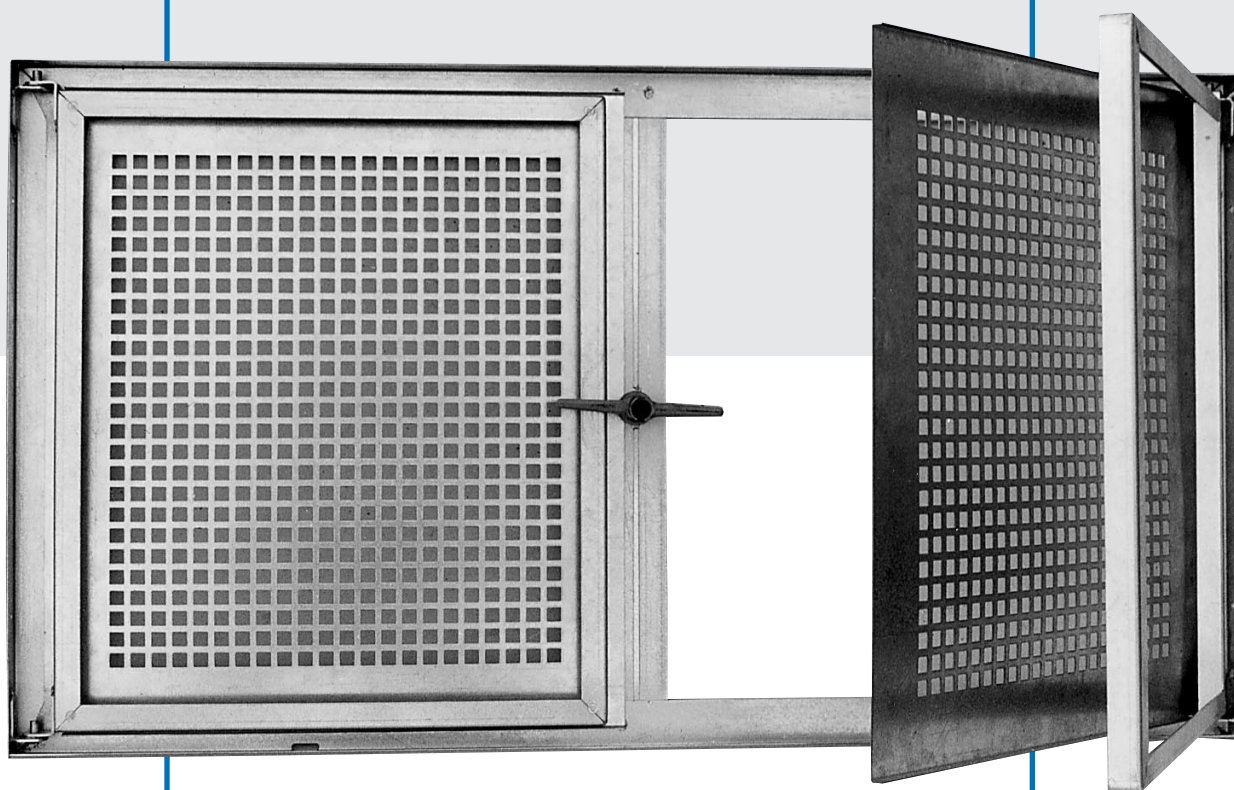


WOLFA

*The brand for
quality and cost
effective building*



Steel basement window

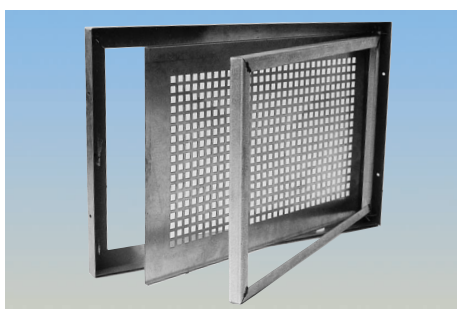
solid and maintenance-free
galvanized or powder-coated
duplex burglar protection as standard
feature

WOLFA

Steel basement windows
solid – maintenance-free

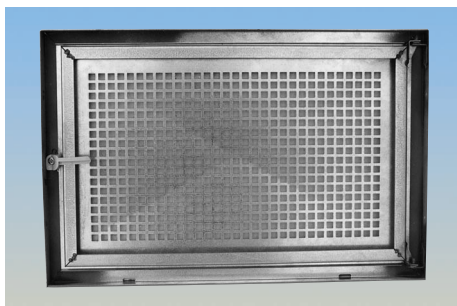
The **WOLFA** steel basement window with the decisive advantages

- galvanized or powder-coated, RAL 7035 light grey
- 5-mm armored sheet glass
- solidly welded 35-mm angle profile
- duplex burglar-proof system protects even when the glass casement is open
- single-sashed or double-casement, either with grille or glass panel to open, or with grille fixed in position and glass encasement to open
- available also as set with basement frame, all wall thicknesses, to be embedded in concrete or brick
- all sizes available



Type SD1

Single-sashed, glass and grille casement to open

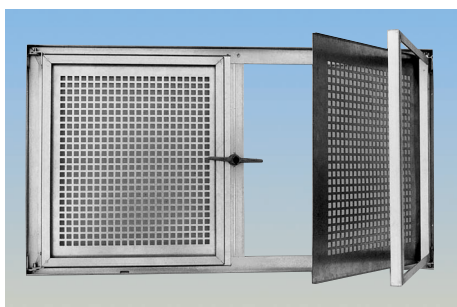


WOLFA steel basement window – the one with the duplex burglar-proof system.

Even when the glass casement is open, the grille casement of the WOLFA steel basement window remains safe against burglars. A special safety lock keeps the grille casement from being forced out of its hinges. The grille casement can be opened only from the inside and only by loosening the fastener screw. The tiresome mounting of additional protections, locks or similar safety devices is therefore no longer necessary.

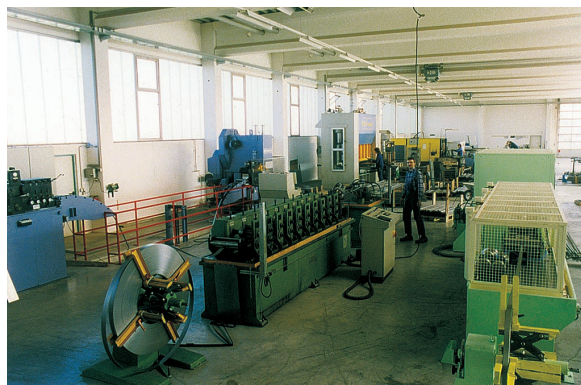
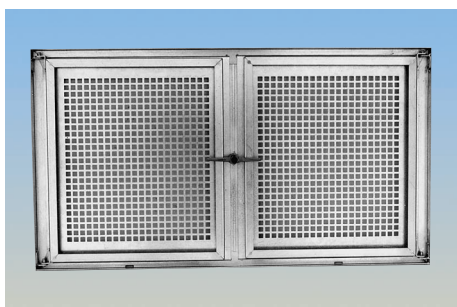
Possible powder-coatings:

RAL 7035 light grey, RAL 9001 white, RAL 8014 sepia brown.
Other RAL colors on request. Standard finish is the light grey RAL 7035.



Type SD2

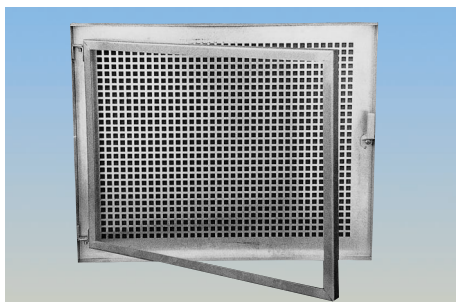
Double-casement, glass and grille casements to open/unhinge



The WOLFA steel basement windows are produced on our brand new high-tech production line which guarantees highest quality at extremely competitive prices.

WOLFA

Steel basement windows
solid – maintenance-free

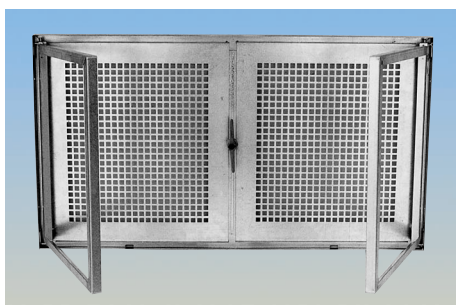


WOLFA steel basement windows types SF1 and SF2:

- swing-out glass encasement, grille fixed in position
- highly burglar-proof, solid design
- competitive price

Type SF1

WOLFA projected window, single-sashed



Type SF2

WOLFA projected window, single-sashed

Standard sizes available

5-mm armored sheet glass

size in cm width x height	Type SD1 single-sashed swing-out grille and glass casements	Typ SD2 double-casem. swing-out grille and glass casements	Typ SF1 single-sashed swing-out grille and glass casements	Type SF2 double-casem. swing-out grille and glass casements
50 x 30	x		x	
50 x 40	x		x	
60 x 30	x		x	
60 x 40	x		x	
60 x 50	x		x	
60 x 60	x		x	
70 x 40	x		x	
70 x 50	x		x	
75 x 50	x		x	x
80 x 40	x	x	x	x
80 x 50	x	x	x	x
80 x 60	x	x	x	x
90 x 50		x		x
100 x 50		x		x
100 x 60		x		x
100 x 70		x		x
100 x 80		x		x
100 x 100		x		x

Special sizes available

5,5-mm glass

Type SD1 single-sashed, swing-out grille and glass casements	any width between 20 and 80 cm any height between 20 and 60 cm
Type SD2 double-casem., swing-out grille and glass casements	any width between 80 and 160 cm for heights up to 70 cm any width up to 120 cm for heights up to 100 cm
Type SF1 single-sashed, swing-out grille and glass casements	any width between 20 and 80 cm any height between 20 and 60 cm
Type SF2 double-casem., swing-out grille and glass casements	any width between 80 and 160 cm for heights up to 70 cm any width up to 120 cm for heights up to 100 cm

WOLFA

Basement frame with
steel basement window
insert

The WOLFA steel basement windows are the perfect match to the WOLFA basement frame type ZO of polyester fibre-glass reinforced.

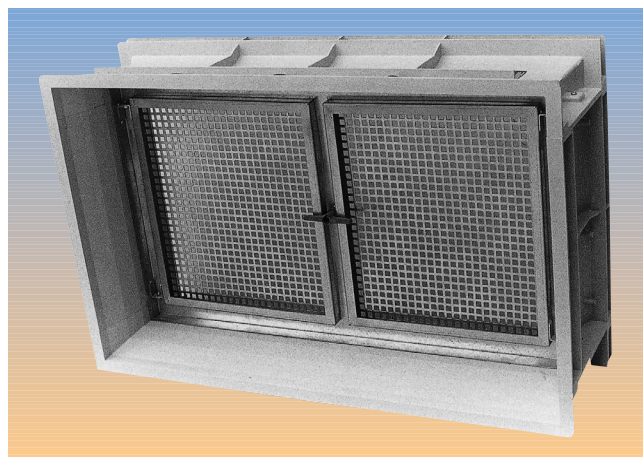
The type ZO basement frame is available in all standard and special 14 to 20 cm wall thickness and can be imbedded in concrete or brick walls.

Mounting of the WOLFA type ZS basement window with frame costs much less than standard windows.

- no framework, no need of timber
- no removing of forms, no chiselling out
- no plaster works, no screeding, no painting
- totally maintenance-free
- stable, sophisticated design
- low-priced

Available steel basement window inserts:

- type SD 2; swing-out grille and glass encasement
- type SF 2; swing-out glass encasement, grille fixed in position



Type ZS window frame with steel basement window insert SD 2

Grille casement, armored sheet glass casement, swing-out units, galvanized and powder-coated

Available wall width in cm:

for concrete walls:

20, 24, 25, 30
and 36,5 cm

for brick walls:

27, 33 and 39,5 cm

width 125 cm:

20, 24, 25 and 30 cm

Available window sizes in cm:

width x height

75 x 50
75 x 62,5
75 x 75

width x height

100 x 50
100 x 62,5
100 x 75
100 x 100
125 x 62,5
125 x 75
125 x 100

Other wall widths between 14 and 20 cm available on request!

WOLFA is better!

Friedrich Wolfarth GmbH & Co. KG
Kunststoff-Presswerk
Friedrich-Wolfarth-Straße 91
97990 Weikersheim-Neubronn
Telefon: 00 49 (0) 79 34 / 91 91-0
Telefax: 00 49 (0) 79 34 / 91 91-50
Internet: <http://www.wolfa.de>
e-mail: wolfa-bauelemente@t-online.de

WOLFARTH
Bauelemente aus
Stahl + Kunststoff