

**Steel and synthetic  
structural components  
for residential, industrial,  
and agricultural buildings  
- with quality  
“Made in Germany”**

window wells and ventilation shafts • apartment, multipurpose and bottom hung windows • thermally insulated, sound insulated and safety glass • plastic and steel basement windows



barn window • drainage systems • doormat gratings • food basins • plastic grates • more GRP products • gratings and web gratings • stairs • perforated sheets • filter bars • compost

| <b>WOLFA</b>                | <b>Residential</b>                | <b>Agricultural / Industrial</b>               |
|-----------------------------|-----------------------------------|------------------------------------------------|
| About WOLFA                 |                                   |                                                |
|                             | Window Wells and Drainage Systems |                                                |
|                             | Glass Production                  |                                                |
|                             | Residential Windows               |                                                |
|                             | Screens/Grilles/Filters, etc.     |                                                |
|                             |                                   | Synthetic Grating,<br>Flooring and Food Basins |
|                             |                                   | Windows for Agriculture<br>and Industry        |
| Manufacturing / Development |                                   |                                                |
| Quality Management          |                                   |                                                |



### **Quality from Experience**

We have been manufacturing high quality plastic and metal products - "Made in Germany" for the last 50 years. We know exactly what kind of craftsmanship and properties are required for use in residential, agricultural and industrial buildings.

As one of the first Companies in Europe processing and manufacturing reinforced fibreglass plastic in one and the same place, we keep setting new standards. Over 50 patents and utility models registered in Germany and Europe show how successful and popular our items are.

To maintain our high standards, we employ qualified professionals, use high-quality materials and always have a quality management in place which guarantees best product quality and good value for your money.

On the following pages of this brochure you will find an overview of the wide variety of our products and their applications.

Best regards from Weikersheim-Neubronn

Ulrich WOLFARTH

Hans-Friedrich WOLFARTH



## Located in Germany, working with German principles

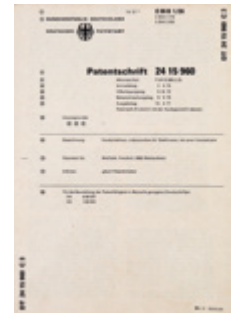
WOLFA currently employs 90 employees. 15 colleagues work in organization and administration, 75 colleagues in development and production.

The „Made in Germany“ quality label is applied to all WOLFA products. Our two production sites are located in:

- Weikersheim-Neubronn in Baden-Württemberg and
- Görschen-Naumburg in Saxony-Anhalt

In addition to the two production sites, WOLFA has seven dealerships in large German cities (Aachen, Berlin, Frankfurt/Main, Hanover, Mülheim/Ruhr, Munich, Saarbrücken)

Our own fleet of vehicles provides reliable service to our customers in Germany and the rest of Europe. We also have depots in most of the EU countries.







Our headquarters in Weikersheim



Production Görschen

## Traditional and Trendy

We go way back

As early as in 1919, Johann WOLFARTH laid the foundations to today's global player. At that time, our company manufactured handcarts and horse-drawn sleighs. Today, WOLFA produces plastics, windows and more for the manufacturing, agriculture and construction industry.

After Johann WOLFARTH passed away, his son Friedrich took over of the company. In the mid 1950s he started experimenting with resins and hardeners and in 1955 he developed the very first window from polyester resin. It was the birth of synthetic windows made from this material in Germany. In 1970, WOLFA produced the first window frame out of fibreglass-reinforced polyester (GRP). This venture opened a totally new market: residential building constructions. In 1975, WOLFA introduced their innovative window wells. From 1990 until this very day, WOLFA has been a success story when it comes to the production of windows and front doors made of high-quality PVC profiles.

### Modern Production Facilities

All WOLFA products are planned, developed and manufactured in Germany at our two locations. Modern production facilities with an area of over 50,000 square meters and powerful high-tech machines guarantee fast and safe production processes. Highly qualified and experienced specialists ensure that all products are of the best quality.



WOLFA offers an apprenticeship program that provides many young people with opportunities to train&work at the company as:

- Toolmakers/mechanics
- Product designers
- Plastic processing specialists
- Salesperson

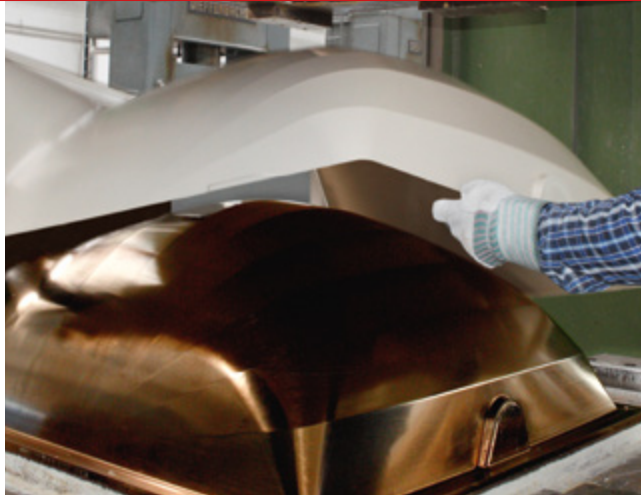




## Pioneers in Plastic Manufacturing

Since 1955, WOLFA has processed and manufactured fibreglass-reinforced polyester (GRP) products.

What makes GRP so successful are its excellent properties which are particularly needed where enhanced durability and stability are an absolute must. Best examples are our window wells and ventilation shafts.



Production shop for GRP products



WOLFA also does successful business in the automotive industry, the shipbuilding industry, in the electrical engineering, medical and aviation industry.

WOLFA uses GRP in form of SMC (Sheet Moulding Compound), which is a mixture of polyester resin, mineral fillers and a large portion of fibreglass. Fibreglass combined with polyester resin results in highest durability and dimensional stability - even under extreme conditions.

## Model for Success: WOLFA Window Wells and Ventilation Shafts

WOLFA Window Wells have proven their worth on thousands of construction sites around the globe. Driven by the changing climatic conditions and the wish to meet our customers' high demands on quality, the company has developed a new window well generation:

The Profi series. The Profi window wells combine the excellent characteristics and practical experience gained during the period of our standard window well programs with the latest technological findings and developments. Profi window wells are offered with closed bottom or special drainage

### Product Features:

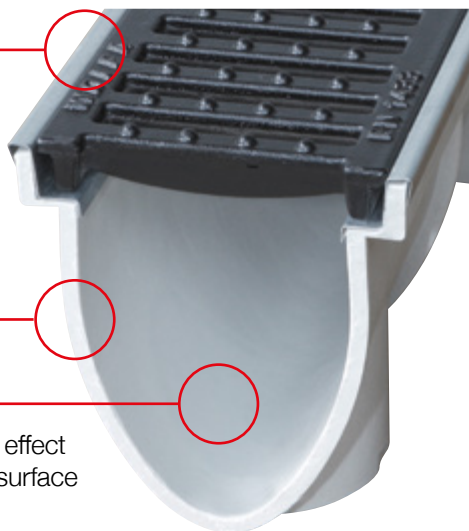
- high performance design:
  - round and angular
- state of the art technology
- weather-resistant and durable
- patented rust protection
- drainage connection can be used from the inside and is optionally available with intake filter and odour lock
- pressurized water sealed and closed model in all sizes
- standard program with appropriate attachments and accessories



breakproof

frost, rust and heat-resistant

good self-cleaning effect thanks to smooth surface



## Drainage Systems

WOLFA produces many products from GRP, for example our well-known gutters and drainage systems. The classic model is the 100/10L gutter, whose design has remained almost unchanged. Meanwhile more than 100,000 meters have been installed at customers all over the world.

### Product Features:

- light weight
- optimal flow area
- chemical-resistant
- resistant against oil benzene and manure
- easy handling
- economically priced





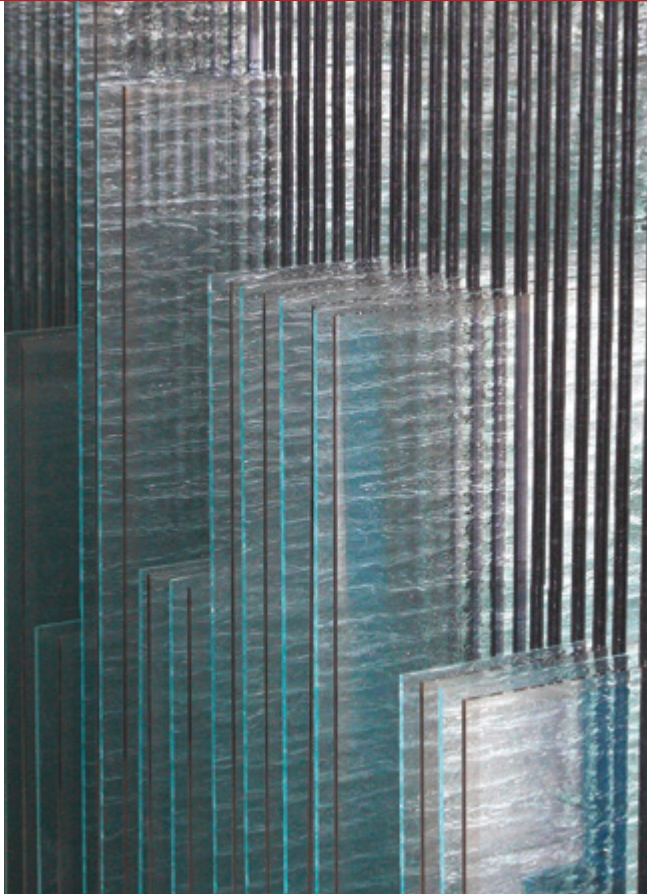


WOLFA has its own modern glass production shop. Almost as soon as we receive the float glass, it is distributed to the various production cells in our more than 70-meter long production shop. The float glass is then made into a great variety of insulated glass, e.g. thermally insulated glass, sound insulated glass or safety glass.

This allows WOLFA to respond almost immediately to customer inquiries and orders. Permanent in-house as well as independent audits make our high quality standards last in time.

[illegible]





## Glass Surfaces

WOLFA provides almost all types of glass surfaces, so that most of our customers' wishes can be realized without limitations.

### Standard insulated glass

In various glass structures

### Heat absorbing glass

As double or triple glazed units up to Ug 0,5

### Sound insulated glass

Depending on the requirements, the windows can be made soundproof up to 43 dB

### Safety glass

From combined safety glass, or hardened tempered safety glass

### Decorative glass

Large selection of satin and structural glass

### Tinted glass

In different strengths and colours

chemical filled middle

heat protected layer

window spacer

**DIN**  
EN 410  
EN 673  
EN 1279-2  
EN 1279-3

dry middle

Secondary gasket (polysulphide)

Primary butyl gasket

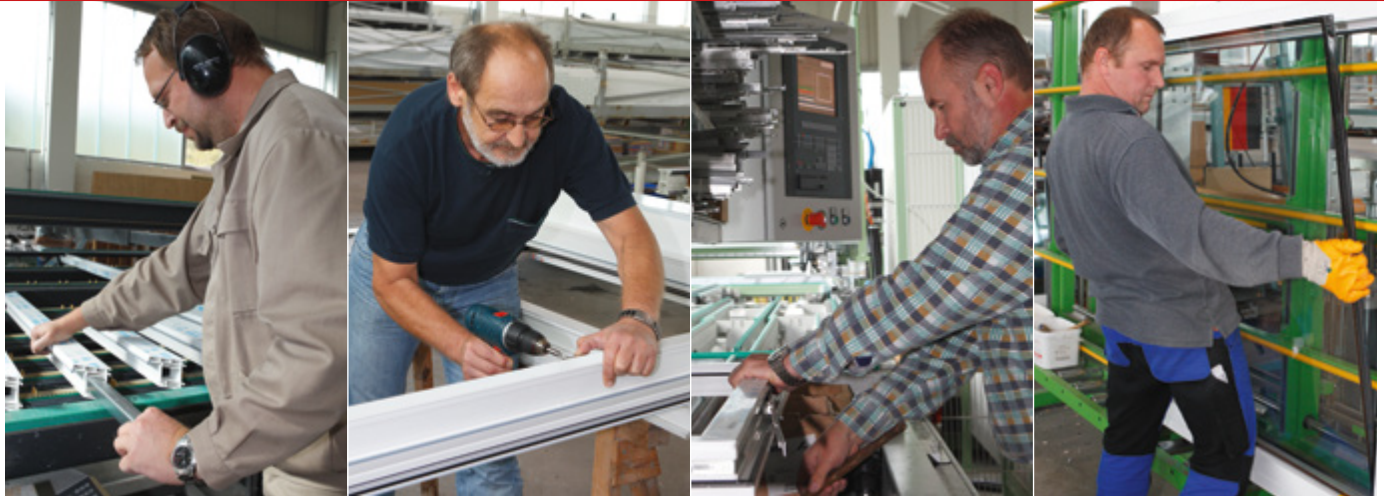
**FOTO TAUSCHEN  
„3FACH VERGLASUNG“**

## Personalized Window

The double-glazed windows have the required production data printed on the spacer bar for identification.

## Windows for your Home

Windows from WOLFA are designed for your comfort. They consist of multi-chambered PVC profiles with steel reinforcement and heat insulation which makes them highly energy efficient. WOLFA also offers special insulated glass from its own production. With our fully automatic window production, WOLFA ensures exact dimensions and fast production times.



## Customized Windows and Doors

All windows and doors are available in a variety of colors, shapes and sizes. Most builders appreciate these endless possibilities very much because they allow them to design and build the house of their dreams.





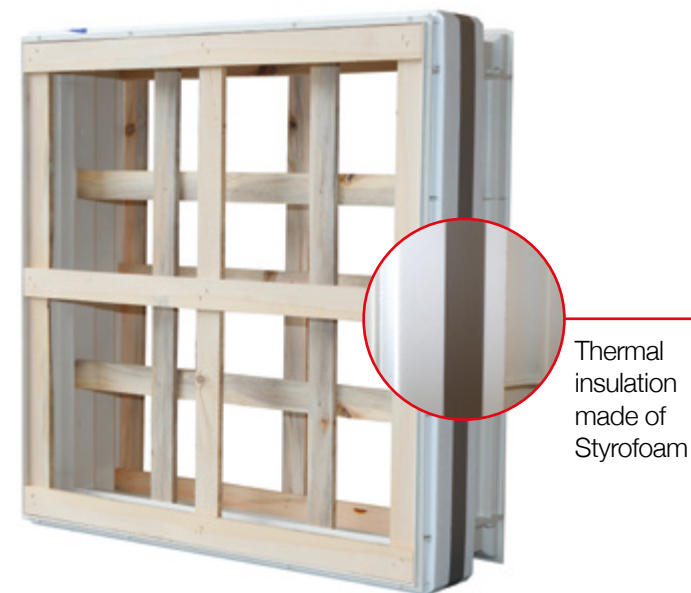


## Sample of a Framed Window

Type ZO-Thermoplus

This heat-insulated type comes in many sizes for different wall thicknesses. Made for wall installation and/or embedding in concrete.

Depending on the intended use, WOLFA offers a wide range of window inserts. WOLFA framed windows are ideal for residential and basement construction projects.



Thermal insulation made of Styrofoam

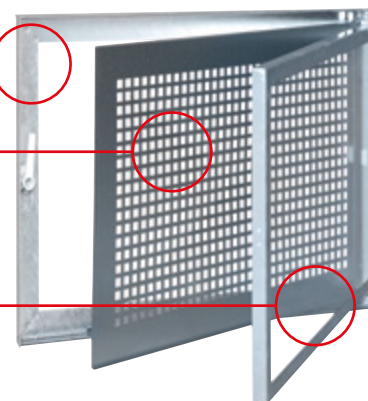


## We supply a large variety of our steel basement windows:

Stable base frame

Screen leaves can be removed to open, high burglary protection

Glass-casement can open



Advantages:

- galvanized or powder coated in many tones
- 5 mm safety glazed
- burglar-proof even with the glass-casement open
- single-sashed or double-casement, either with grille or glass panel to open, or with grille fixed in position and glass encasement to open.
- available also as set with basement frame, all wall thicknesses, to be embedded in concrete or brick
- all sizes available



## Screens, Gratings and Perforated Plate

WOLFA uses its largest manufacturing facility for gratings and perforated plates. In one single 8-hour shift, up to 2,900 meters of metal can be processed. WOLFA is specialized in pressed metal gratings of 30/30 mm and 10/30 mm mesh size. In addition to these standard sizes, grates can also be tailored to the customer's wishes.

Our high-tech production line allows us to produce a great variety of perforated plates. Powder-coated or enamelled plates can be made available on request. Maximum size = 1.250 x 2.500 mm.

### Products:

- gratings in normal and customized sizes
- doormat gratings
- stainless steel gratings
- garage gratings
- steel staircase grating
- standard gutter grating
- bar grating
- wire grating
- insect screens
- perforated plate
- right angle frames
- filter bars
- metal compost screens

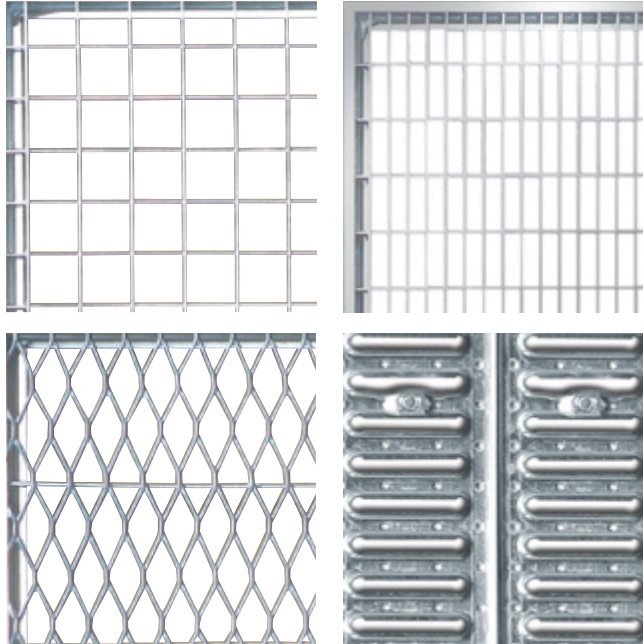




## WOLFA makes better, safer, and more stable gratings.

The innovative WOLFA pressed metal gratings offer substantial advantages over other grating systems:

- better stability thanks to the optimum profile of the grating frame
- blanking and notching do not weaken either frame or brackets
- better carrying capacity of the brackets thanks to the specially developed rounded frame profile
- the grating frame profile is free of folded edges; the grating remains clean and free of dirt accumulations, is therefore much more rust-resistant
- the WOLFA grating range is available in all standard heights and sizes with or without frame



## Doormats

- break-resistant, impact-resistant and shockproof
- all doormats come with pressed on discharge connection
- easy installation
- different grid inserts, easy to change
- smooth surface without void spaces for easy cleaning
- weather-proof
- low priced

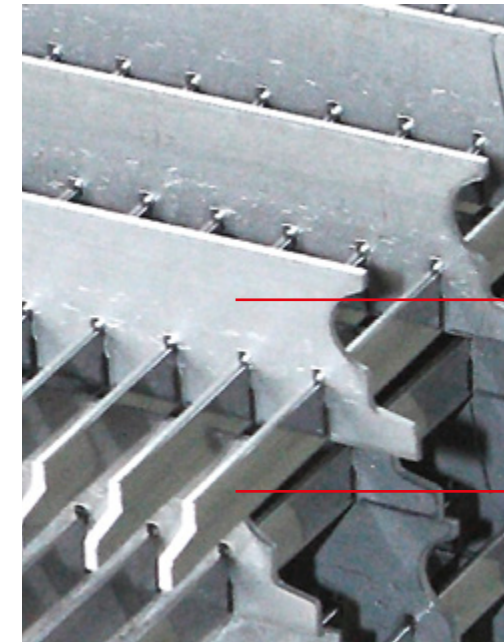


## Filters

- filters with adjustable angle support
- filters for wheelbarrows:  
fits most wheelbarrows

## Composter

- simple push fit
- matching end caps for the cover and ground



brackets

filler bar



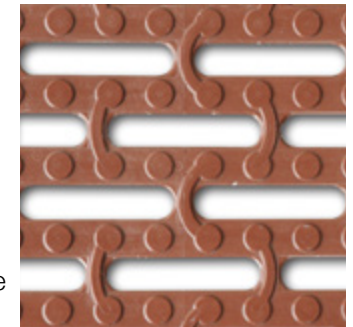
## Plastic Products for Agriculture

Plastic WOLFA grates have been used with great success in agricultural buildings for more than thirty years. We offer a perfect flooring system for pigs, calves, sheep and goats.

The grates are certified for animals weighing up to 200 kg. WOLFA offers 6 differently dimensioned grate types for a variety of applications.

Advantages of plastic GRP grates by WOLFA in agricultural structures

- animal-friendly and warm
- high amount of slots, clean animals
- self-supporting without reinforcing profiles
- easy installation and cleaning
- acid and rot-proof
- hygienic and bacteria-resistant
- high load bearing capacity, ideal for pigs and calves
- low flammability (no PVC, polypropylene or similar thermoplastic materials)
- they have proven their worth for decades, long life



WOLFA Food Basins ingots made of fiberglass reinforced polyester:

- cost-effective
- temperature-resistant
- acid-, lye-, and rot-resistant
- true to size, shatter-proof
- easy mounting
- clean, smooth and non-porous surface
- easy cleaning (sanitary, prevents the settling of germs)
- secure hold in concrete (through ribs and bars)
- tight-joints (4-time joint)



Flooring



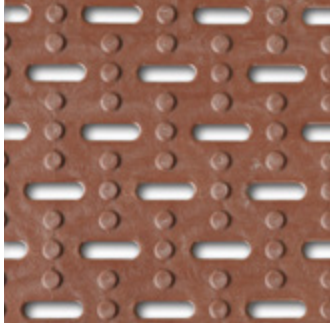
Food Basin I



Food Basin II

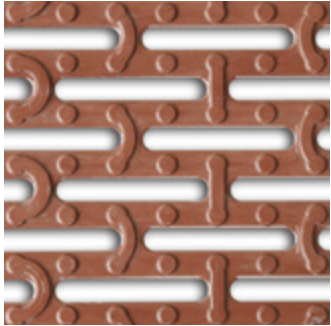






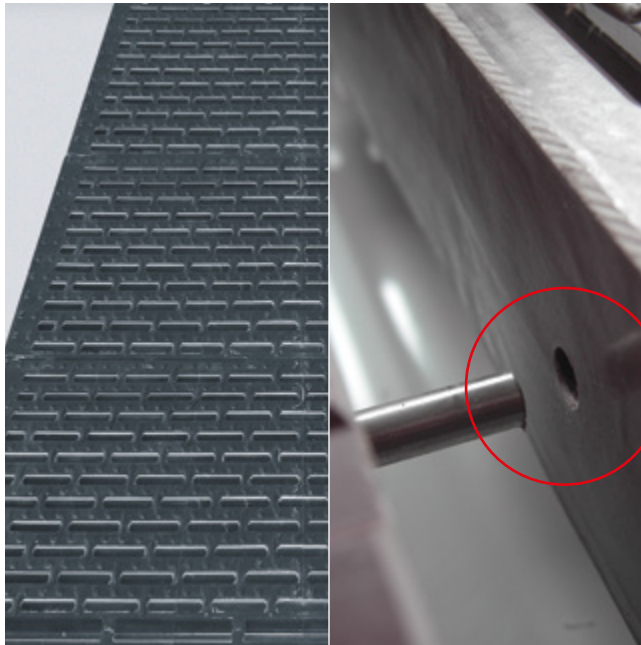
For industrial environments

- high corrosion resistance
- chemical resistance
- high load capacity
- simple and fast installation
- no electrical or thermal conductivity
- resistant to heat and cold
- high UV resistance
- long life



## Plastic Products for Industry

In the food and beverage industry, the automotive industry, in pickling and galvanic processes the plastic WOLFA grates find multiple uses. You can find our products on platforms, stages and catwalks, the grates cover gullies, dumps and shafts or are used to prevent access to hazardous areas.



Anchor pin  
and  
receptacle

The innovative flooring types VI and VII are lined up next to each other and connected by means of stainless steel pins. Each element comes with a pin on one side and the respective receptacle on the other. The receptacle is marked on the grate. The elements are fit into each other in direction of the arrows and thus firmly connected. Disconnection of the grates is just as simple and fast which makes cleaning much easier.

## Plastic Windows for Agricultural Buildings

WOLFA supplies windows for cattle and hog barns, horse stables, riding schools and garages. We are the leading company in Europe to manufacture plastic windows for agricultural purposes, and have been doing so for 55 years. Our windows are produced of fiberglass reinforced polyester, a material which is, in contrast to PVC, acid-, weather- and temperature-resistant.

Our patented window sill ensures a safe water discharge to the exterior and keeps the walls dry.

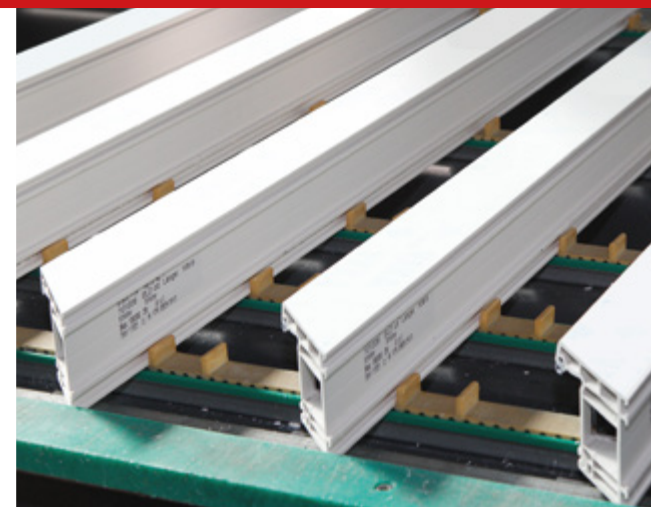
We have installed more than 1,7 million WOLFA barn windows worldwide, and all of them have met and surpassed our customer's expectations.

WOLFA is one of the leading window suppliers for agricultural buildings of all types.



Plastic barn window

- millions of satisfied customers worldwide - for over 55 years
- leading designer of plastic windows for agricultural purposes
- fiberglass reinforced polyester, therefore temperature- and weather-resistant (no PVC)
- solid window handles for locked and open positions (no weak angles)



- safe condensation water discharge through patented crimped-on window still
- either with standard 6mm or 15mm insulated glass
- the screw-on glass casement allows easy glass insertion at later points in time (frame neither glued nor clamped)
- expert double window rebating
- easy mounting - no concrete block



The safety lock secures the window in its final position







## Plastic Windows for Industrial Buildings

An increasing amount of WOLFA windows are installed in industrial buildings and warehouses. The narrow outside edges of the frame allow their easy installation in site-mixed concrete and prefabricated concrete components. WOLFA frames are made of fibreglass-reinforced polyester (GRP). This thermosetting

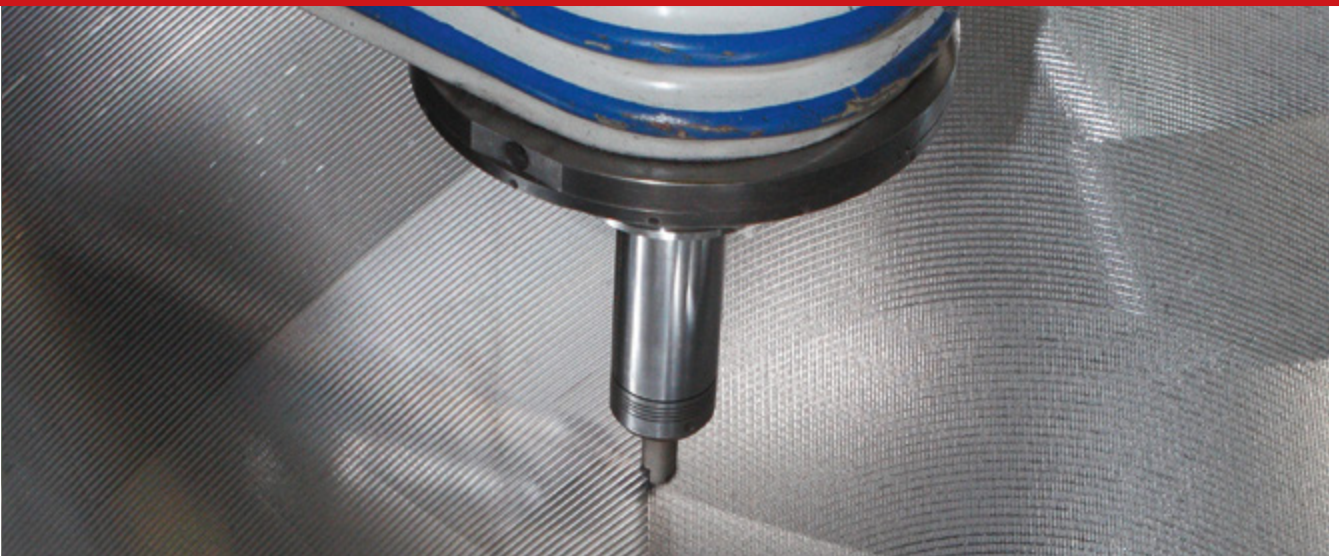
plastic material possesses unbeatable advantages over conventional thermoplastics such as polypropylene. Our frames are acid and alkaline proof and almost absolutely resistant to heat and frost. These characteristics plus window widths up to 125 cm are extremely beneficial for the builders of industrial and agricultural buildings.



Framed bottom-hung window

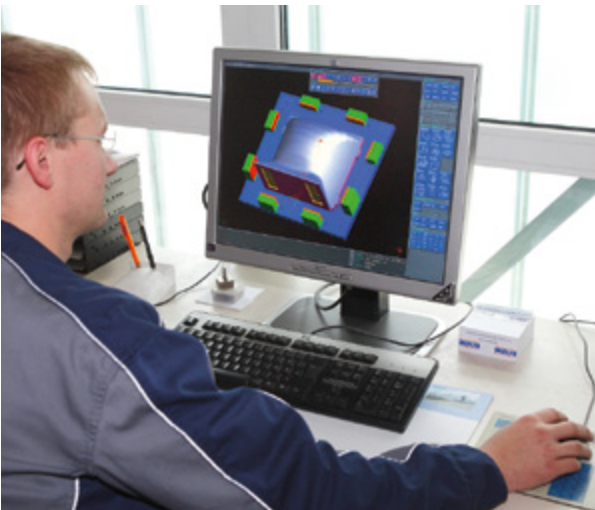
- best heat insulation values
- employment of heat-absorbing glass Ug 1.1
- X and XL window pane possible
- window frame made of acid-proof fibreglass reinforced polyester
- flame-resistant
- weather-proof and maintenance-free
- frame size up to 125cm x 100cm
- perfect for installation in brick and concrete walls





## Tool Design and Development

WOLFA develops and designs its own machines and equipment. The state-of-the-art CNC milling centers are controlled and driven by CAD/CAM systems. In our design department, the shapes are created on the designer PCs and displayed as three-dimensional models which are doublechecked and tested. If the model complies with our high-quality standard, an up to 10 ton steel block is cut and sculpted to prototype the finished product. WOLFA has always been focusing on intelligent and innovative product solutions, which allows the company to gain a competitive edge in terms of productivity and quality. Thanks to our specialists in tool and product design, our extremely short response and delivery times, WOLFA has been gaining more and more customers all over the world.





## Quality Management

WOLFA is the largest Window Well manufacturer in Germany. WOLFA „Quality made in Germany“ is our pride and daily challenge because we strive to meet our customers' demands and wishes. Always. In Germany, in Europe, in the World.

### Carefully Monitored Safety Standards

WOLFA Profi series Window wells have undergone a series of test cycles at the Materials Science and Testing Institute in Leipzig. All tests were a success, all products proved to be absolutely waterproof and watertight. In a long-term test, the Profi series were exposed to extreme conditions and kept their shape and characteristics at all times

### RAL Certified Thermal Insulation and Certified Insulation Processes

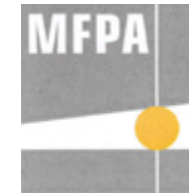
The heat-absorbing WOLFA glass is processed on our automatic high-tech production lines. Our insulated glass brands WOLFA-Therm and WOLFAMaxitherm are highly energy- efficient and thermally insulated. The production of insulated glass has been audited and certified by the IFT Rosenheim.

The WOLFA quality label stands for our products made of steel and plastic. The company is fit to tackle the challenge of adapting to ever-changing markets and economies. High quality



standards are what our customers demand and we make sure that these demands are turned into reality.

Consistent quality management now and in the future enhances and cements our customers' trust in us and our products.



# ***WOLFA***



Our headquarters in Weikersheim



Production in Görschen

**WOLFARTH**  
Components made  
of steel and plastic

Friedrich WOLFARTH GmbH + Co. KG

Friedrich-WOLFARTH-Straße 91  
D-97990 Weikersheim-Neubronn  
Tel.: +49 (7934) 9191-0 • Fax: 9191-50  
Email: [mail@WOLFA.de](mailto:mail@WOLFA.de) • Web: [www.WOLFA.de](http://www.WOLFA.de)

Gewerbegebiet Süd Nr. 4  
D-06618 Görschen b. Naumburg  
Tel.: +49 (34445) 802-0 • Fax: 802-15  
Email: [nl-goerschen@WOLFA.de](mailto:nl-goerschen@WOLFA.de)